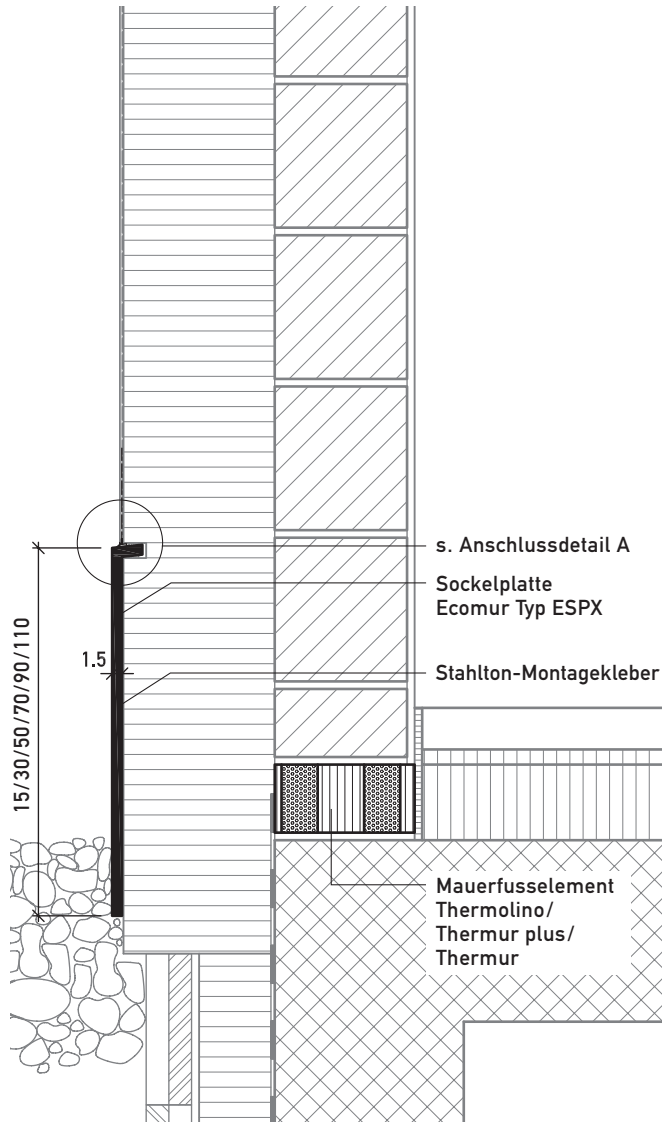


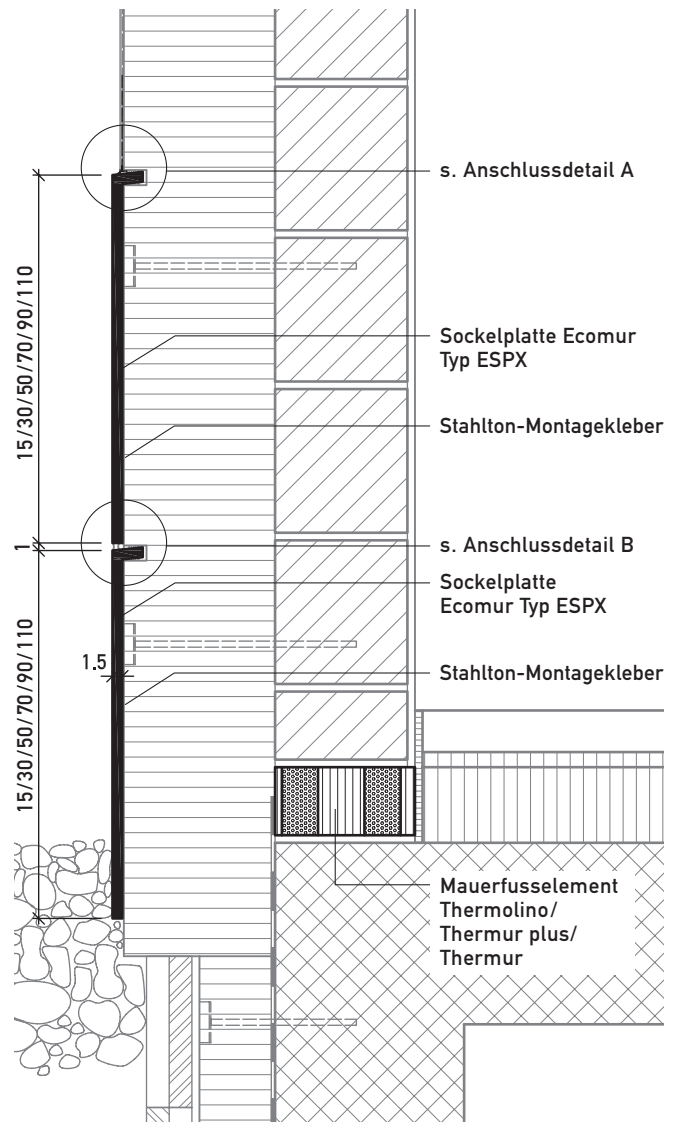
Sockelplatten

Ecomur Typ ESPX (M 1:10)

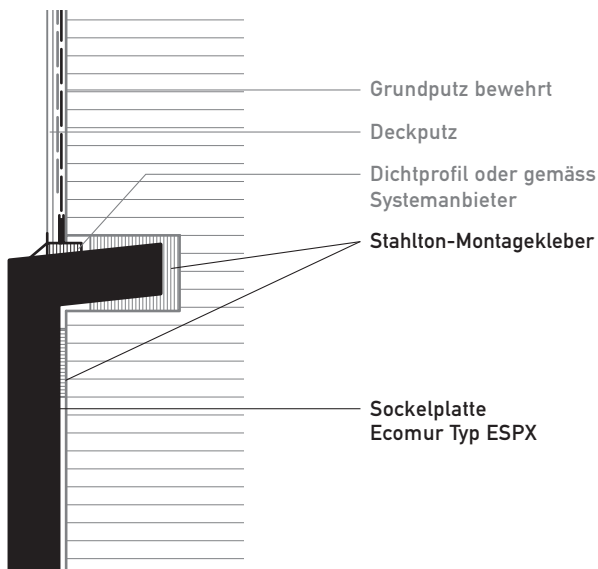
Typ ESPX
Vertikalschnitt



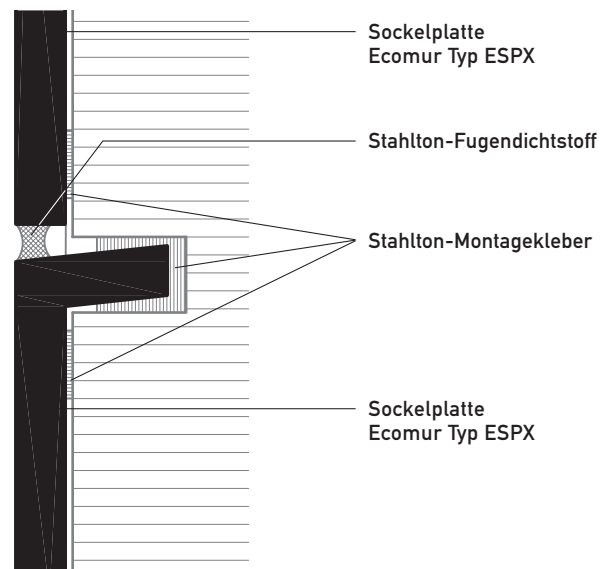
Typ ESPX gestulpt
Vertikalschnitt



Anschlussdetail A 1:2



Anschlussdetail B 1:2

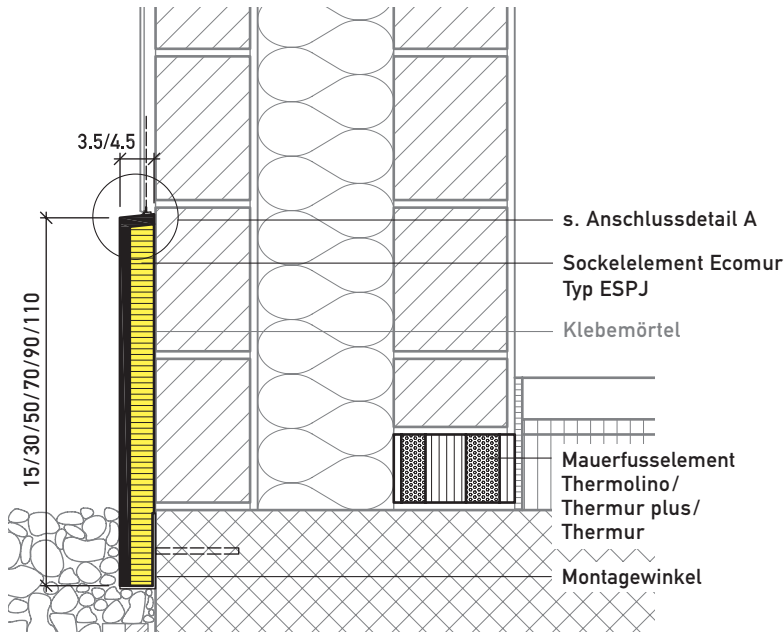


Sockelplatten

Ecomur Typ ESPJ / EASJ (M 1:10)

Typ ESPJ

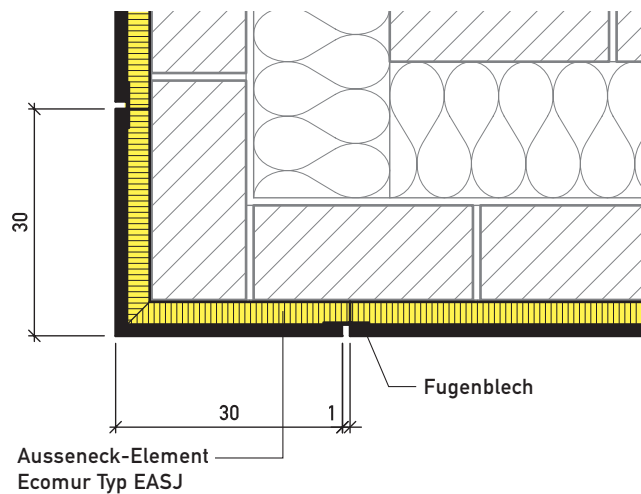
Vertikalschnitt



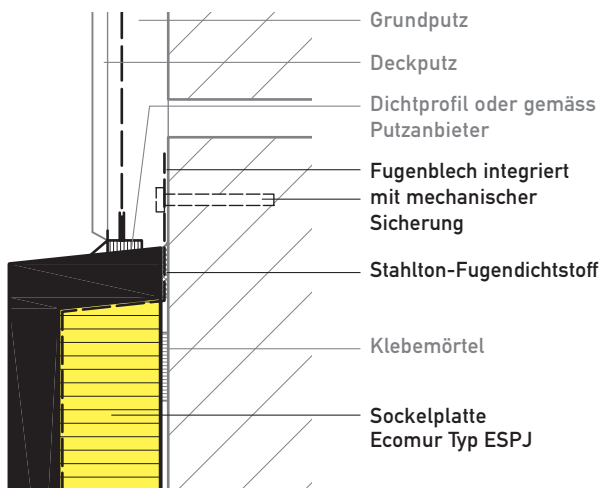
Zweischalenmauerwerk

Typ EASJ

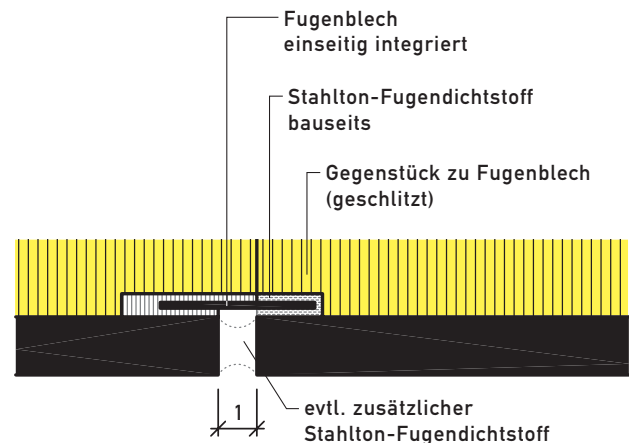
Horizontalschnitt Aussenecke



Anschlussdetail A 1:2



Horizontalschnitt Fugenausbildung 1:2

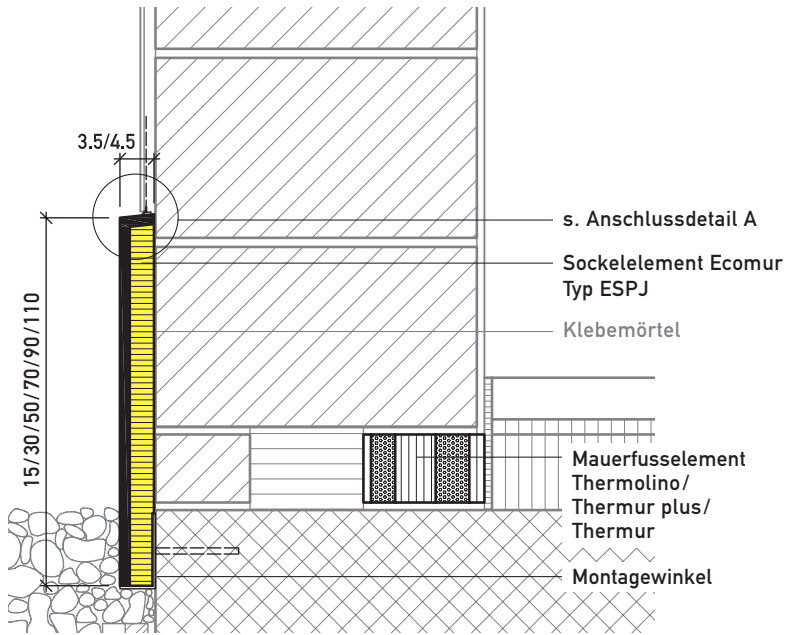


Sockelplatten

Ecomur Typ ESPJ / EASJ (M 1:10)

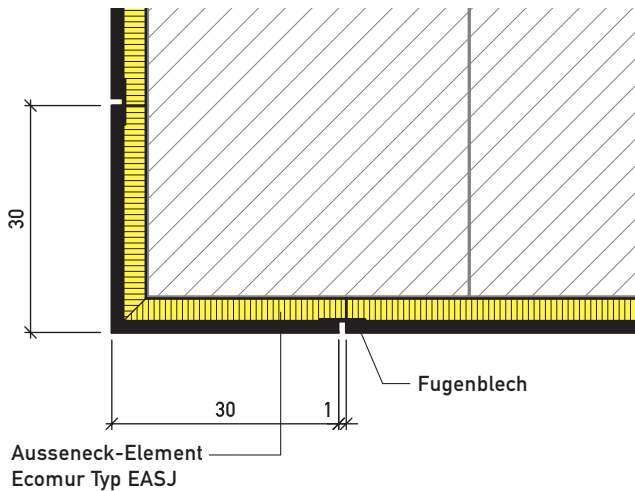
Typ ESPJ

Vertikalschnitt

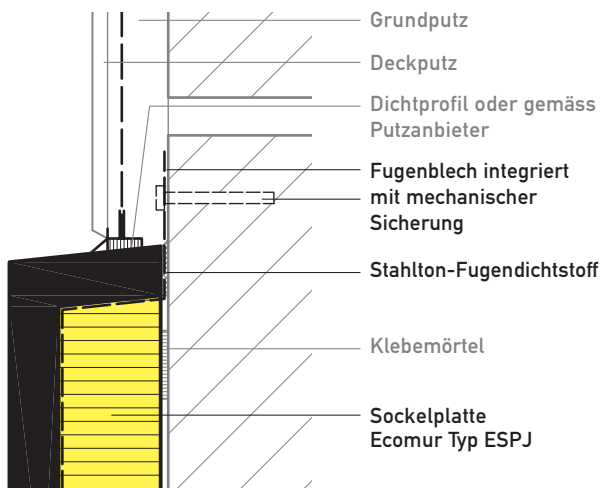


Typ EASJ

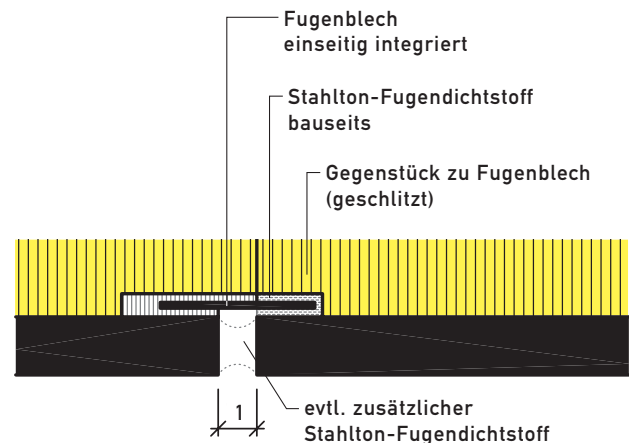
Horizontalschnitt Aussenecke



Anschlussdetail A 1:2



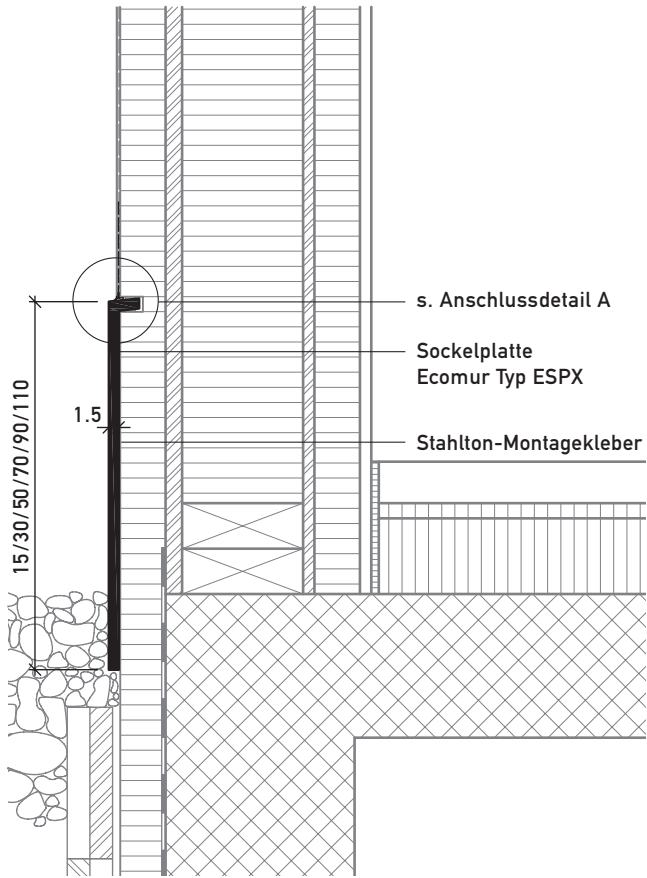
Horizontalschnitt Fugenausbildung 1:2



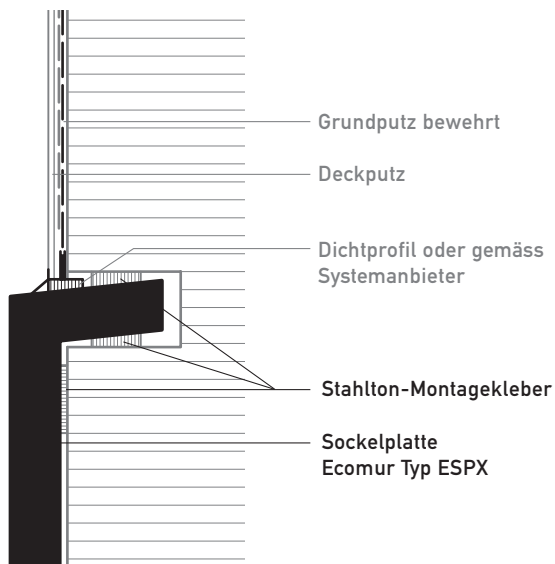
Sockelplatten

Ecomur Typ ESPX (M 1:10)

Sockelplatten Ecomur Vertikalschnitt



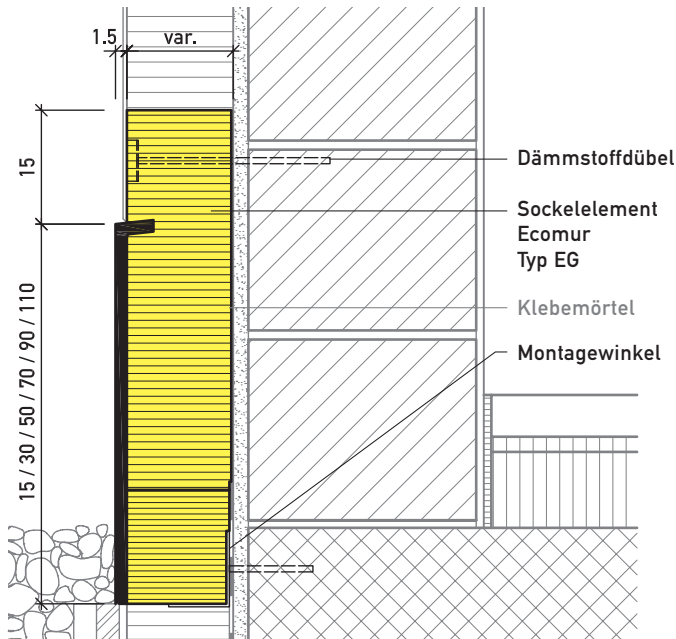
Anschlussdetail A 1:2



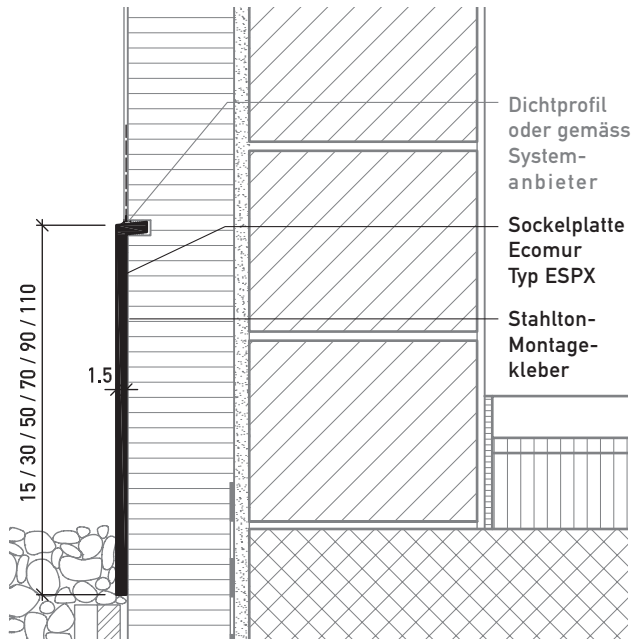
Sockelelemente, Sockelplatten

Ecomur Typ EG/ESPX/EAS/EASX (M 1:10)

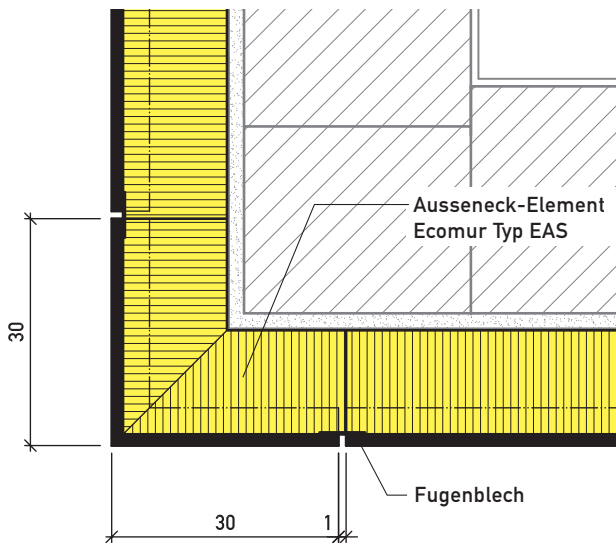
Vertikalschnitt



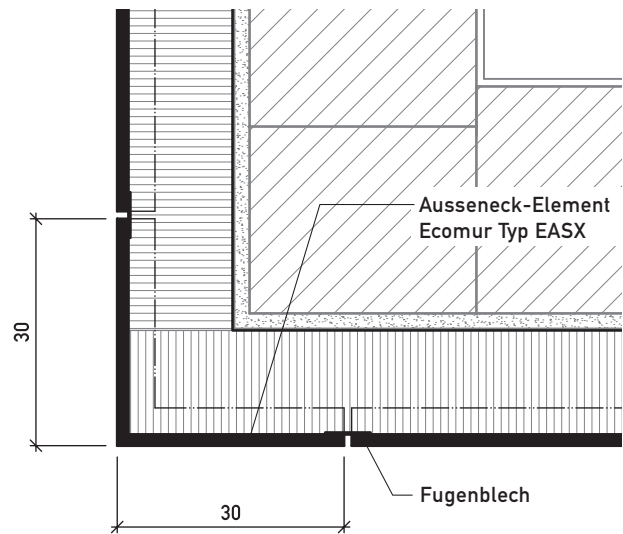
Vertikalschnitt



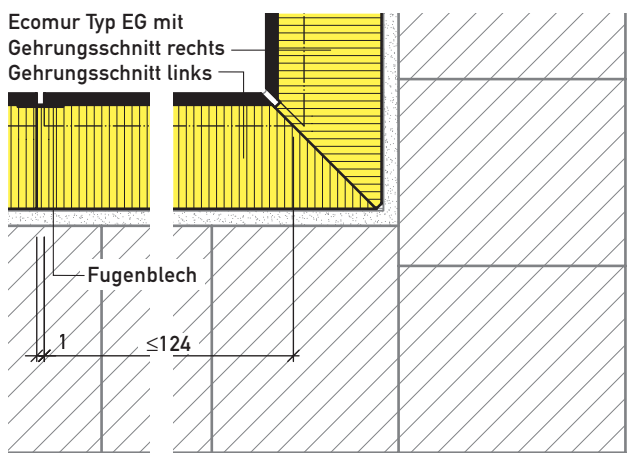
Horizontalschnitt Aussenecke



Horizontalschnitt Aussenecke



Horizontalschnitt Innenecke



Horizontalschnitt bei Türe

